



DECISION MAKING TOOLS

Chapter 4

September 18



DUE THIS COMING WEEK

- Thursday
 - Mini Quiz on Chapters 2
 - Information
- Next Week – Tuesday to Thursday at 5 pm
 - Test #1
 - No class next week, instead do the test

EXTRA CREDIT OPPORTUNITY ATTEND TECH/ANALYTICS CAREER DAY



- Attend any session and receive credit for a missed Attendance day (even going forward)
- You must register at the end of the class with the code provided in the session and select MIS 213 - Janicki

5G AND NOW 6G BY 2030

[HTTPS://WWW.YOUTUBE.CO
M/WATCH?V=AVCAOVQG
5KK&LIST=RDCMUCMIJRAW
DNSNZUYEN2UWA0PA&IND
EX=1](https://www.youtube.com/watch?v=AVCAOVQG5KK&list=RDCMUCMIJRAWDNSNZUYEN2UWA0PA&index=1)

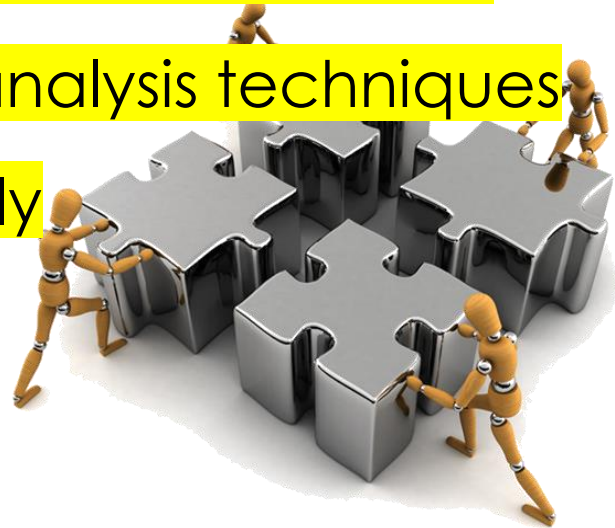
[HTTPS://WWW.YOUTUBE.CO
M/WATCH?V=GV80WGA5K
PG](https://www.youtube.com/watch?v=GV80WGA5KPG)

CHAPTER 4



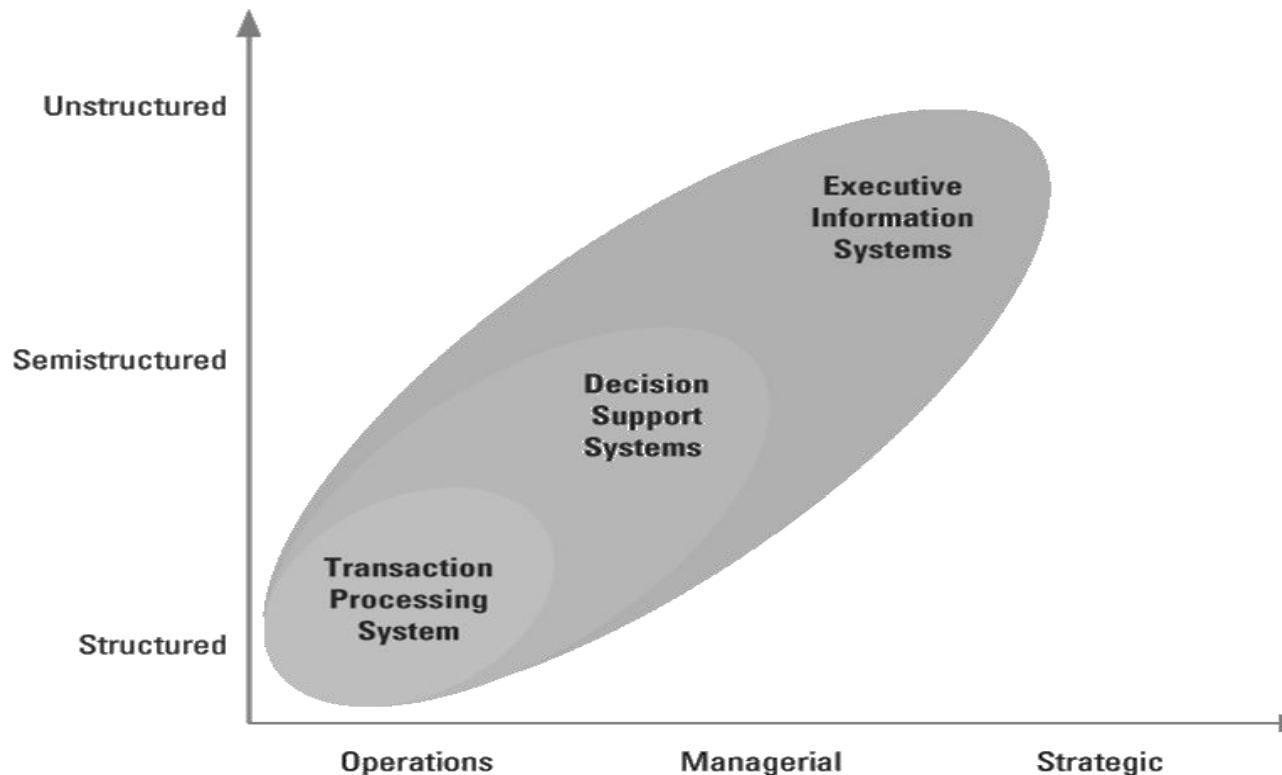
MAKING BUSINESS DECISIONS

- Managerial decision-making challenges
 - Analyze large amounts of information
 - Apply sophisticated analysis techniques
 - Make decisions quickly

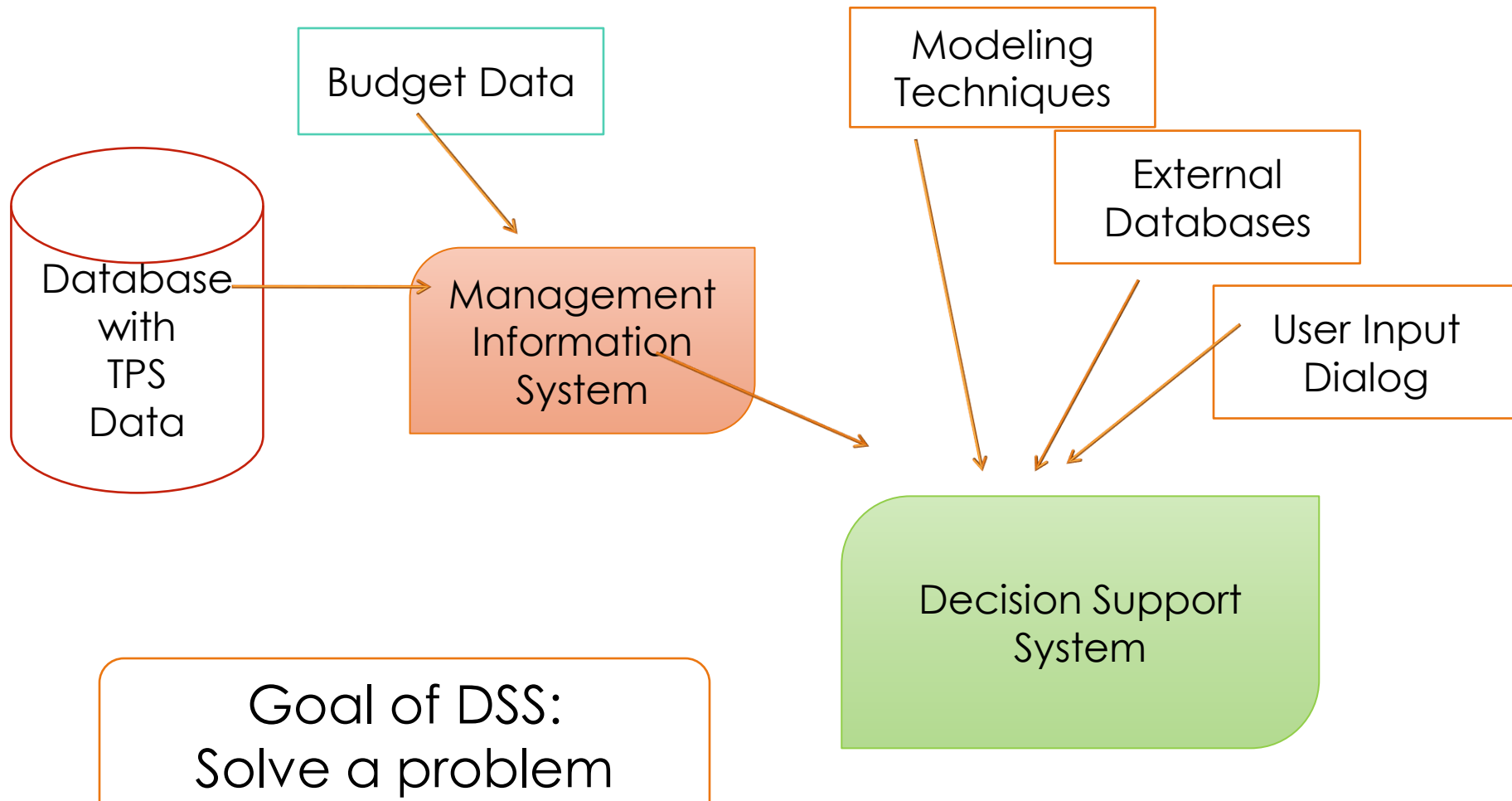


SUPPORT: ENHANCING DECISION MAKING WITH MIS

Types of Decision Making MIS Systems



DECISION SUPPORT SYSTEM GENERALLY COMBINE INTERNAL / EXTERNAL SOURCES



MODELING TECHNIQUES IN DSS

Model Type	Description	Software
Financial	Provide returns for a special project	Spreadsheets
Statistical	Trend projections	Spreadsheets or Data Analytics (Tableau)
Graphical	Trends in a visual manner	Spreadsheets or Presentation Software
Project Management	Time lines, critical paths	MS Project or similar

DSS VERSUS MIS

Factor	DSS	MIS
Problem Type	Unstructured , cannot be easily programmed, UNCW Accepts a higher % of non-instate students	Structured Problems Ordering quantity
Users	College grads Upper management	Operations / front line College grads
Emphasis	Making a decision	Information Providing
Development	Users are part of the development	Provided by others

EXCEL

- Excel is a Decision-Making System
 - Analyze data and help to recommend solutions
 - Provide graphical capabilities making it easier for management to understand
 - Unique Decision Making tools in Excel
 - **Pivot Tables** - powerful tool to calculate, summarize, and analyze data that lets you see comparisons, patterns, and trends in your data.
 - **Scenario** – will calculate alternative solutions to a problem and permits management to select their best solution.
 - **Solver** – will calculate the 'best alternative' based on management criteria.