

## User Guide 5.1

### Inserting via a Details View

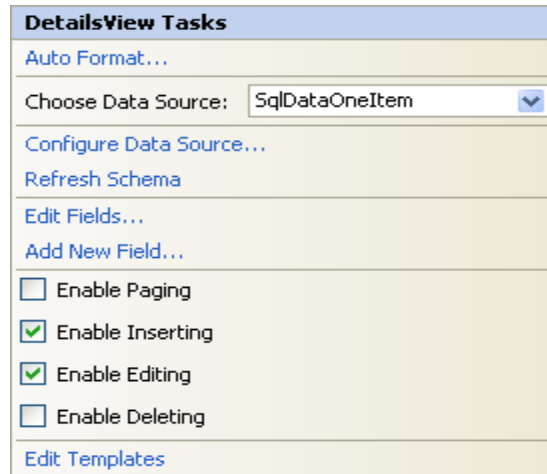
This guide assumes you have the details view already on your web page and have already built an “INSERT” stored procedure, see Guide 5.0 on how to place your details view on your web page and bind to the gridview.

#### IN SQL:

1. Build an INSERT stored procedure to insert a new item into this table, use the query wizard to help you build the insert stored procedure.

#### IN ASP.NET

2. If you did not have your insert stored procedure when you originally built the details view, suggest you delete the SQLData Source and rebind with select, update and insert stored procedures.
3. Now you should be able to select the Inserting and editing options as shown:
4. Create template columns as necessary and insure error checking for both the editing and inserting modes. Drop down boxes will reduce the requirement for error checking.
5. To insure your ‘grid view’ (the other object on the webpage) is updated, you will want to place:



**This.\_GridView1.DataBind()** in the subroutines for inserted and updated (click the lightning bolt on the details view properties window).

6. Here is the code to change the details view from edit mode (default) to inserting when you click the ADD button (you should place this on the web page)

**This.\_DetailViewName.ChangeMode(DetailsViewMode.Insert)**

7. This code might will modify the grid from insert mode to edit mode:

**This.\_DetailViewName.ChangeMode(DetailsViewMode.Edit)**

8. One of the common errors is the 'too many arguments' for the stored procedure. To solve:
  - a. Count the number of input parameters in the insert stored procedure
  - b. When in insert mode, count the number of editable text/drop down boxes etc
  - c. If the count is not the same then make the two match (set Read Only properties for example)
  - d. If the count is the same, it generally is the naming, check the spelling of each parameter (look in the HTML under INSERT Parameters) and match it exactly to the @parameters in the stored procedure.